

# WINE COUNTRY WALK

**DATE** – MARCH 3, 2012

**SANCTION NUMBER** – 92515

**SPECIAL EVENT CLASSIFICATIONS** – Museum Walk, Honoring Law Enforcement, Murals, Main St., CA Counties-Napa Co.

**START POINT** – Sterling Vineyards, 1111 Dunaweal Lane, Calistoga, CA. 94515.

**START TIME** – 9AM to 1PM      **FINISH** – by 4PM

**DISTANCE AND DIFFICULTY** – The 10K walk is rated 1A, and the 5K walk is also rated as 1A. The walks will take you through historic Calistoga and along a paved trail through vineyards. Wheelchairs and strollers are NOT recommended on the 10K walk but should find little difficulty on the 5K walk. Pets are allowed but kept on leash, picked up after, and under control at all times.

**AWARD** – No ‘A’ award available. ‘B’ awards available.

**FEES - \$3.00 for AVA Credit.** One may walk for no credit or free. Pre-registration is not required. No refunds will be given. This event is sanctioned by the American Volkssport Association (AVA), a member of the International Federation of Popular Sports.

**STIPULATIONS** – Every participant, including infants and small children, must complete a start card, which needs to be carried on the walk and checked at all control points. All start cards remain the property of the Sonoma Stompers and must be turned in at the finish point when the walk is completed. Everyone is welcome. Family participation is encouraged. An adult must accompany children under 12.

**IVV BOOKS** – Don’t forget your Event and Distance Books! Books and New Walker Kits will be on sale. Insert cards will be available.

**DISCLAIMER:** The sponsors are not liable for accidents, thefts, and/or material damage. Every effort will be made by the sponsors to make this a safe, enjoyable, and memorable event.

**MISCELLANEOUS:** Water will be available at the start/finish but water should also be carried. Restrooms are available at the start/finish and along the route. Food and refreshments are available along the route. Parking in the parking lot at the start point. Pets OK with pick up. Sterling Vineyards is a beautiful winery situated on a hill

overlooking the Napa Valley. A fee is required to take a tram to the winery and a tasting. The Calistoga Visitors Center, 1133 Washington St. has discount coupons for most restaurants in Calistoga. The walk takes you past this Center; (opens at 9AM).



**Spend a weekend walking with us – Other year round walks available include:**

**SCHULZ MUSEUM:** In western Santa Rosa, a 1A rated walk through established neighborhoods and past the Charles Schulz Complex. A museum, ice skating rink, café, gift shop are here.

**LUTHER BURBANK GARDENS:** A 1A rated walk takes you through the heart of Santa Rosa and past some of the cities most historic sites. The Burbank Home and Gardens are on the route.

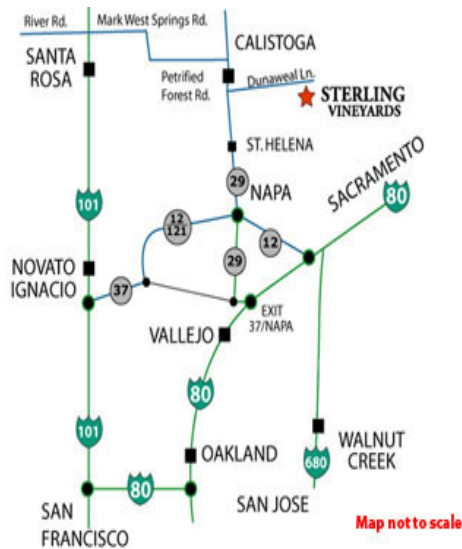
**On your way home stop and walk in Healdsburg, Sonoma, or Petaluma.**



# Wine Country Walk

Come Join Us

10K and 5K Walks

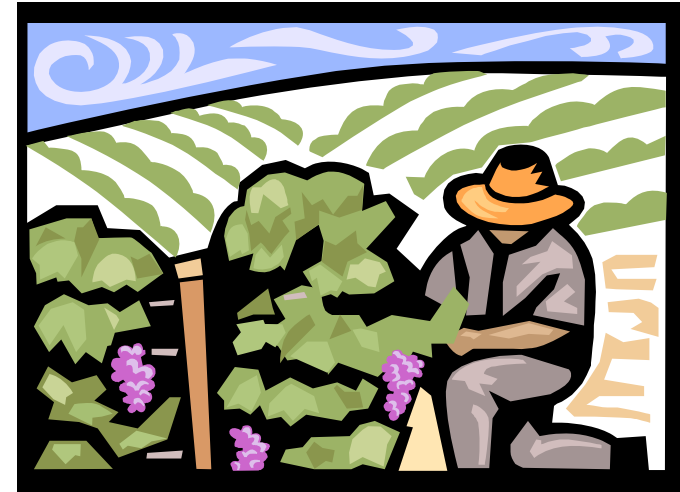


## Directions

**From the San Francisco Bay Bridge** 1. Head east on I-80 E toward Sacramento/Reno (25 mi) 2. Take exit 33 toward Auto Mall Pkwy, Napa/CA-37 (0.2 mi) 3. Keep left at the fork, follow signs for Napa/CA-37 and merge onto CA-37 W (1.9 mi) 4. Take exit 19 toward Napa/State Hwy 29 (0.5 mi) 5. Turn right at CA-29/Sonoma Blvd. Continue to follow CA-29 (6.8 mi) 6. Continue straight onto CA-12/CA-29 (signs for Napa/State Hwy 12/Sonoma Calistoga/State Hwy 29). Continue to follow CA-29 (13.8 mi) 7. Continue on St Helena Hwy (6.9 mi) 8. Turn right at Zinfandel Ln. (1.4 mi) 9. Turn left at Silverado Trail S (10.4 mi) 10. Turn left at Dunaweal Ln. Sterling Vineyards will be on the left. (0.4 mi)

**From Sacramento** 1. Head west on I-80 W (40+ mi) 2. Take the State Hwy 12 exit toward Napa/Sonoma (0.5 mi) 3. Merge onto CA-12/Jameson Canyon Rd (5.8 mi) 4. Turn right at CA-12/CA-29 (1.2 mi) 5. Continue straight to stay on CA-12/CA-29 (signs for Napa/State Hwy 12/Sonoma Calistoga/State Hwy 29). Continue to follow CA-29 (13.8 mi) 6. Continue on St Helena Hwy (6.9 mi) 7. Turn right at Zinfandel Ln. (1.4 mi) 8. Turn left at Silverado Trail S (10.4 mi) 9. Turn left at Dunaweal Ln. Sterling Vineyards will be on the left. (0.4 mi)

**From the Golden Gate Bridge** 1. Head north on US-101 N/Golden Gate Bridge. 2. Continue north through Santa Rosa to the Mark West Springs exit. Sign says "To Calistoga". 3. Take Mark West Springs exit, turn right (eastbound) at stop light. Continue on Mark West Springs Road to stop sign at Petrified Forest Road. 4. Turn left on Petrified Forest Road. 5. At four-way stop, turn right (southbound) onto Foothill Blvd. 6. Proceed through next four-way stop; Foothill Blvd. becomes Highway 29. 7. Turn left at Dunaweal Lane. 8. Sterling Vineyards will be on the right.



**STERLING VINEYARDS**  
**CALISTOGA, CALIFORNIA**

**MARCH 3, 2012**

More info at [www.CaliforniaVolkssportAssociation.org](http://www.CaliforniaVolkssportAssociation.org)

CONTACT : Marilyn at 707-539-8083  
Day of walk 707-486-8528 (cell)



**SANCTIONED  
EVENT**



*Eligible for credit toward  
IUU Achievement Awards*